

# Epilogue

## Searching games in Tournament base

The best way to search for games is using Turbo database of Klaas Bor. If you can't afford to buy this program, there is a free online database you can use: Tournament base of Piet Bouma. All recent games are collected in this online database and many tournaments of the past are included. In this database you can search for games of a certain player. It works as follows:

- 1) Go to <http://toernooibase.kndb.nl/>
- 2) Click "games" (left on top)
- 3) At the left are recent games. At the right are recent games that are commented on. You can click on these if you want and you can watch the particular game.
- 4) At the bottom there is a window with the text: "search within the database players". Clicking the arrow (at the right of the window) will show you a list with names of players.
- 5) Click the name of who's games you want to see.
- 6) A list of games appears. Clicking on a game will show you the game applet.
- 7) Use the buttons to replay the game.



## Online draughts servers

If you want to play online blitz draughts games you can go to the KNDB Damserver:

<http://damserver.kndb.nl/damserver/>

## Websites on draughts

A nice site for English readers is Wieger Wesselink's 10 x 10:

<http://10x10.dse.nl/>

Blog of Oscar Lognon in French:

<http://damlog.over-blog.com/>

## Books on draughts

There aren't many English books on draughts. A notable exception is:

**The fascinating world of draughts**

50 years World Draughts Federation

## Draughts at Youtube

<http://www.damvids.net84.net/>

<http://www.youtube.com/user/Akashian123?feature=mhee>

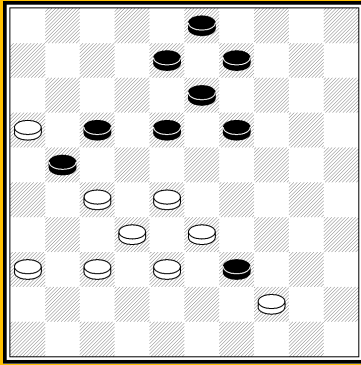
## Compositions

Instead of playing games many draughts lovers rather create or solve compositions. Creating compositions is a work of art. There even is a special magazine about draughts compositions called *De Problemist* (The composer). The website of this magazine is:

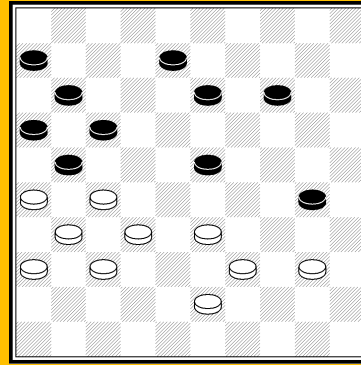
<http://www.dorinde.nl/steenslag/problemen/D.P.htm>

We are interested in compositions with a natural starting position. There should be only one solution with a sharp ending and with no possibility to reverse the moves.

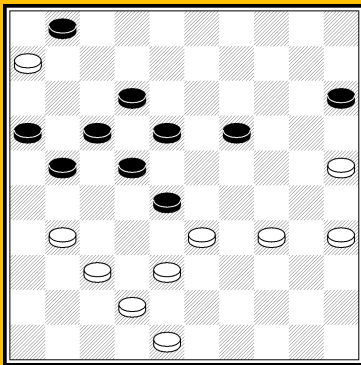
You can learn a lot of both solving and creating such compositions. We will show some nice compositions by the great composers. After that I will show some of my own creations.



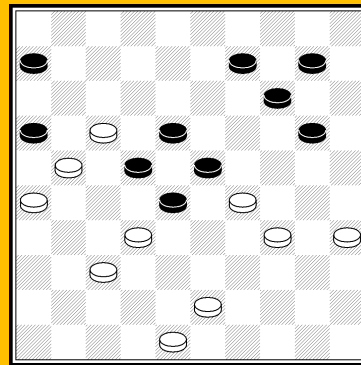
C1. A. Polman



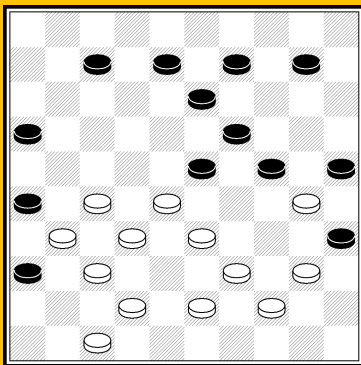
F5. A. Timmer



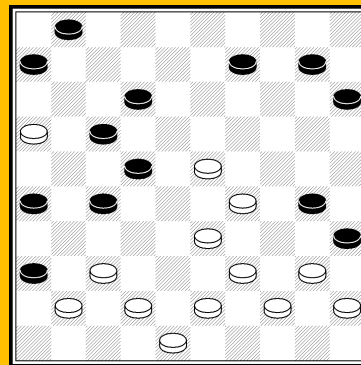
C2. O. Dijkstra



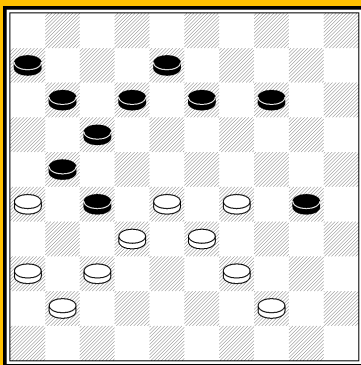
C6. A. Renooij



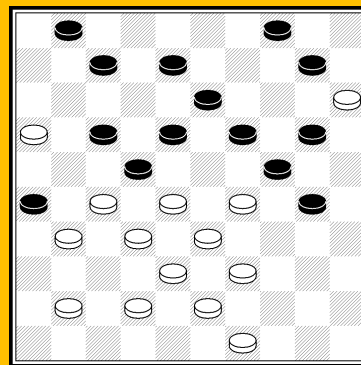
C3. A. de Zwart



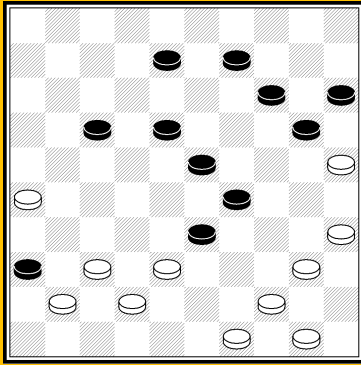
C7. R. de Jong



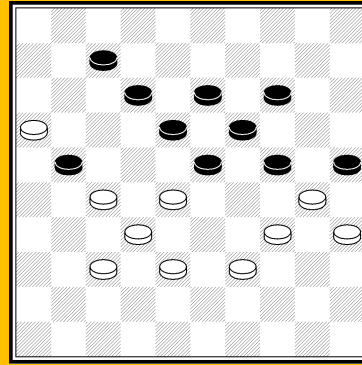
C4. T. Smedinga



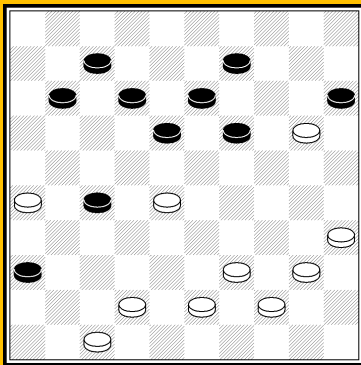
C8. S. Perepelkin



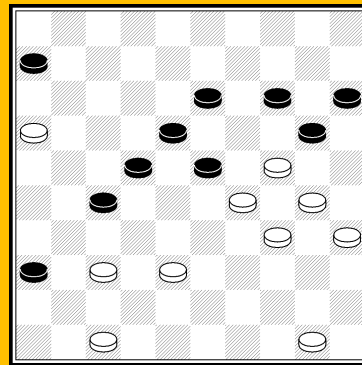
**C9. O. Baeke**



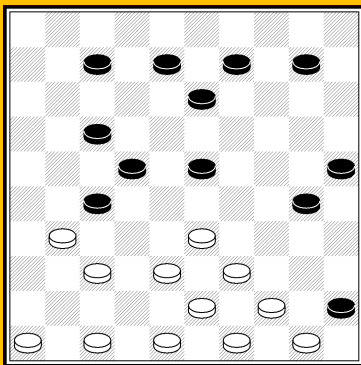
**C13. W. Jurg**



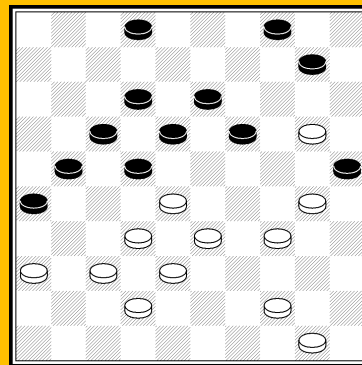
**C10. V. Bulat**



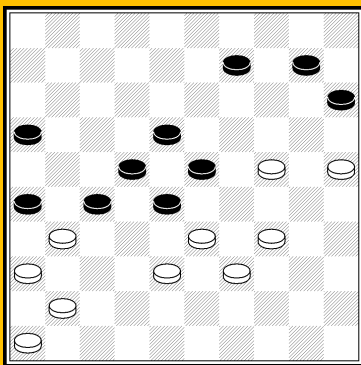
**C14. H.G. van den Berg**



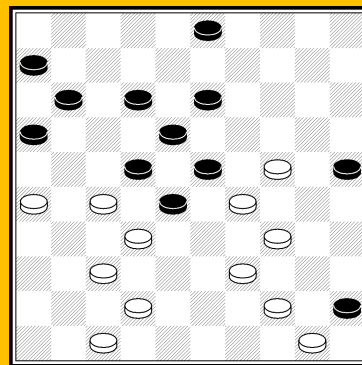
**C11. C. Jurriëns**



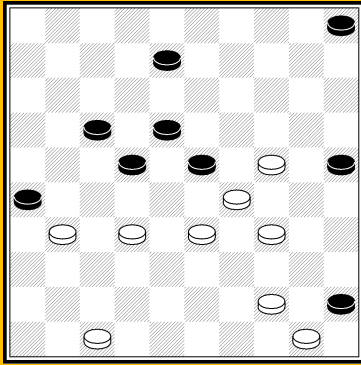
**C15. I. Weiss**



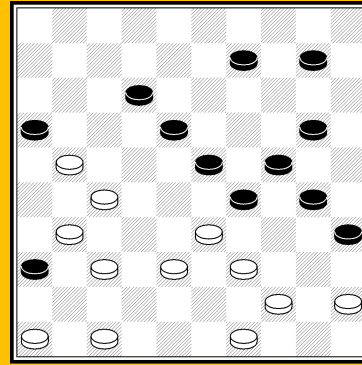
**C12. J. Pennings**



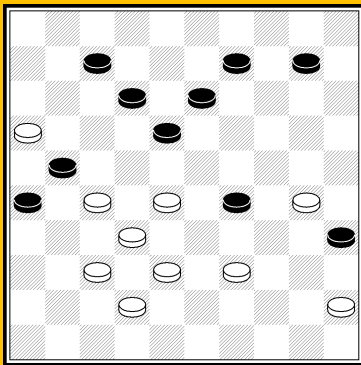
**C16. A. Solnikov**



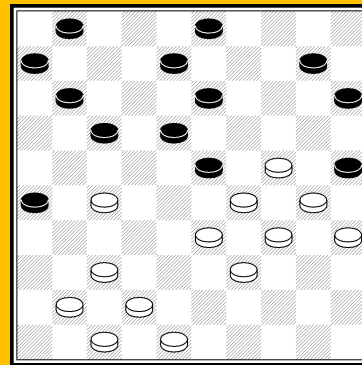
C17. A.J. de Vries



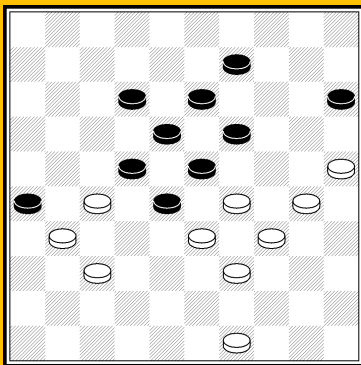
C21. J. Viergever



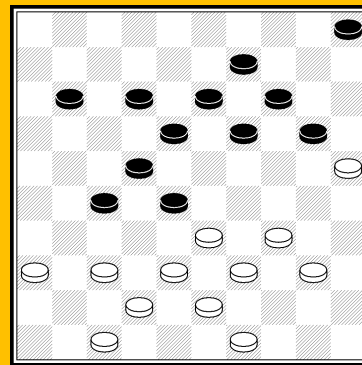
C18. G. Geerlings



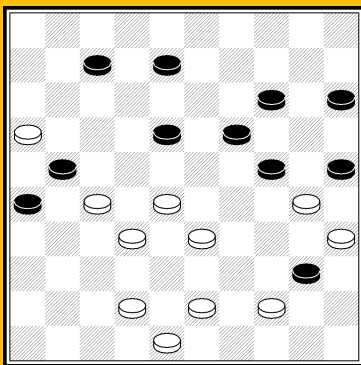
F22. J.J. van Tol



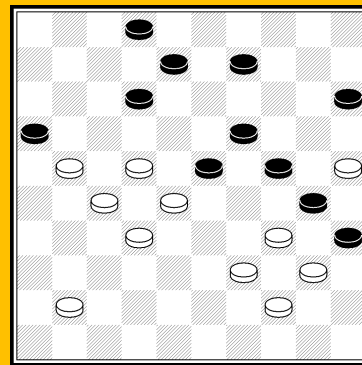
F 19. F. Hermelink



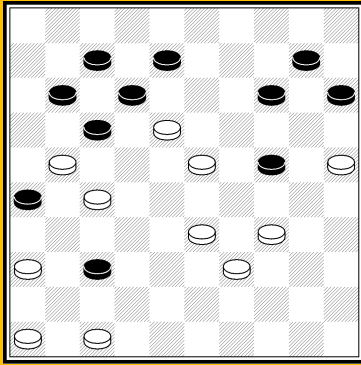
F23. J. Metz



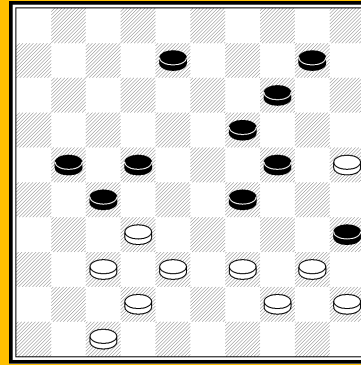
C20. J.H. Koops



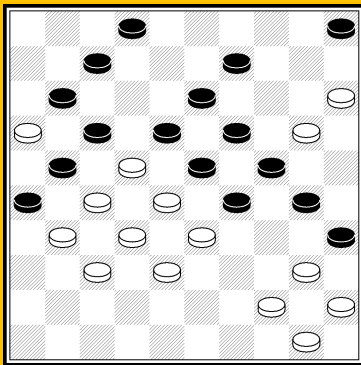
F24. B. Fjedorov



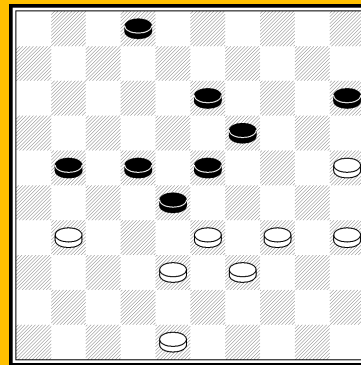
C.25 J. Pennings



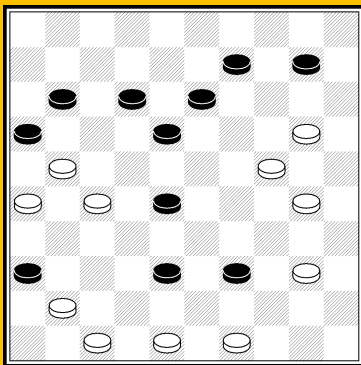
F29. L. Schut



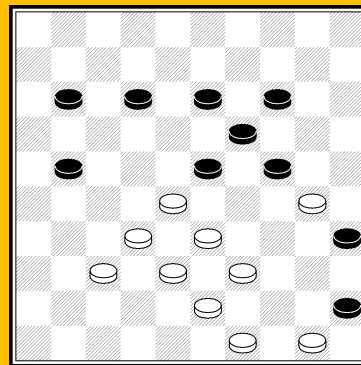
C26. G. Artigala



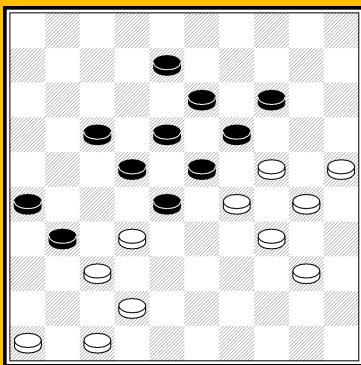
F30. V. Swizinski



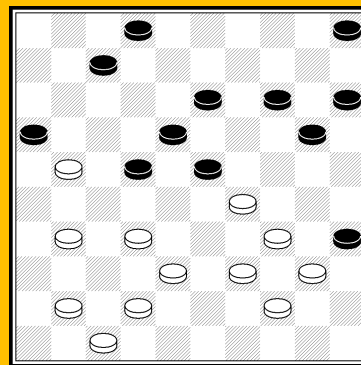
C27. T. Smedinga



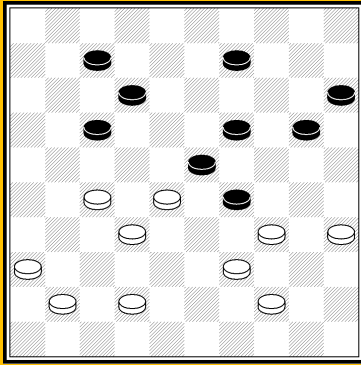
C31. A. Stuurman



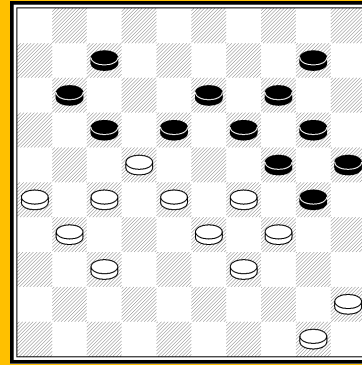
F28. E. Répetto



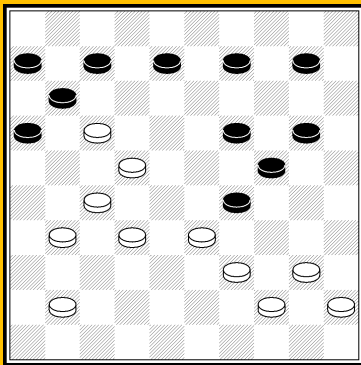
C32. A. Timmer



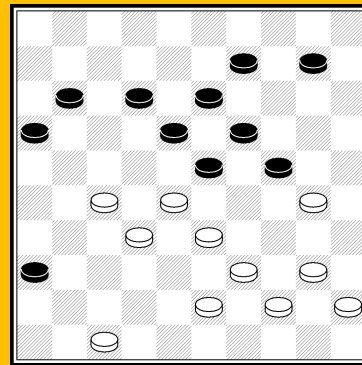
F33. A. Kuyken



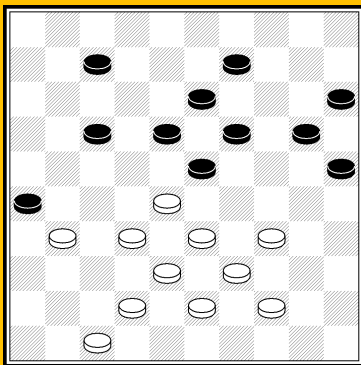
C37. A. Miedema



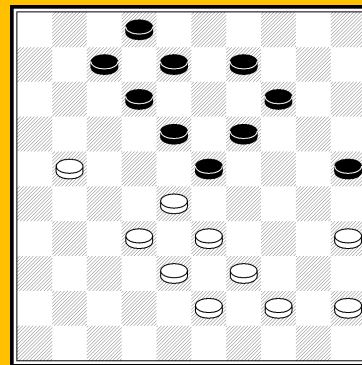
C34. L. De Rooij



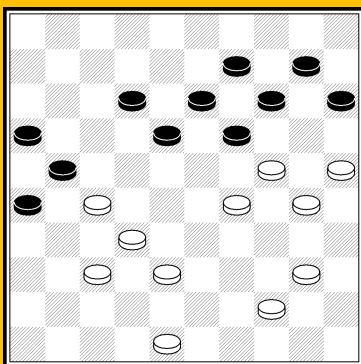
C38. A. Timmer



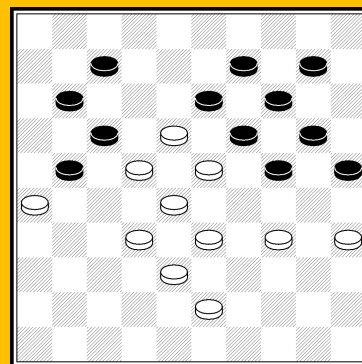
C35. A. Van der Stoep



F39. D van den Berg



F36. J. Van den Boogaard



C40. H. Van Meggelen

## Solutions

- C1.** 1.33-29 39x50 2.27-22 18x27  
3.29-23 50x22 4.23x14 9x20 5.36-31  
27x36 6.16x9 3x14 7.37-31 36x27  
8.32x3 20-25 9.3x20 25x14 10.38-33  
14-20 11.33-29 20-25 12.29-24 +
- C2.** 1.25-20 28x30 2.35x13 18x9 3.48-  
43 15x24 4.31-27 21x41 5.42-37 41x32  
6.38x7 1x12 7.6-1 16-21 8.1x3 21-26  
9.3x21 26x17 10.43-38 +
- C3.** 1.47-41 36x49 2.27-21 16x29  
3.40-34 23x41 4.34x1 25x43 5.1-40  
26x37 6.40-45 49x40 7.45x36 35-40  
8.36-22 40-45 9.22-50 +
- C4.** 1.39-34 30x50 2.37-31 27x38  
3.33x42 50x22 4.31-27 22x48 5.41-37  
48x31 6.36x20 17-22 H.J. van Alphen  
1956: 7.20-15 22-28 8.29-23 28x19  
9.15-10 8-12 10.10-4 19-24 11.4-9  
12-17 12.9-18 24-30 13.18-40 30-35  
14.40-49 17-22 15.49-44 22-27 16.44-  
49 27-32 17.49x21 35-40 18.21-17 40-  
45 19.26-21 +
- F5.** 1.40-34 30-35 2.34-29 23x34  
3.39x30 35x24 4.27-22 17x48 5.26x17  
11x22 6.31-26 48x31 7.36x29 8-13  
R.C. Keller 1945: 8.29-24 6-11 9.32-  
27 11-17 10.24-20 13-19 11.20-15 19-  
23 12.15-10 23-29 13.10-5 16-21  
14.27x16 17-22 15.5-32 29-34 16.32-  
49 22-28 17.16-11 28-33 18.11-7 34-  
40 19.49x35 33-38 20.35-19 38-43  
21.7-2 43-49 22.19-35 49-32 23.26-21  
32x16 24.35-49 +
- C6.** 1.43-39 16x38 2.48-42 38x47  
3.39-33 28x30 4.35x13 47x21 5.26x10  
+
- C7.** 1.37-31 36x49 2.48-42 26x48  
3.16-11 48x34 4.33-28 22x24 5.40x20  
49x18 6.11x4 15x24 7.4x3 1-7 8.3-25  
35-40 9.25x1 40-44 10.45-40 44x35  
11.1-7 +
- C8.** 1.39-34 30x46 2.28-23 26x39  
3.23x3 24x42 4.3x41 46x21 5.16x9  
4x13 6.15x4 7-12 7.4x7 1x12 8.49-43  
12-18 9.43-38 +

- C9.** 1.44-39 33x44 2.50x39 36x47  
3.26-21 17x26 4.37-31 26x48 5.49-44  
48x45 6.44-40 47x33 7.35-30 45x34  
8.30x10 15x4 9.25x34 +
- C10.** 1.28-23 19x28 2.42-38 15x24  
3.47-41 36x47 4.26-21 47x45 5.21x23  
18x29 6.44-40 45x34 7.39x6 29-33  
8.35-30 9-13 9.30-24 13-18 10.6-1  
33-39 11.1x34 39x19 12.43-39 +
- C11.** 1.44-40 45x34 2.50-44 27x36  
3.47-41 36x47 4.38-32 47x15 5.48-42  
15x47 6.46-41 47x36 7.43-38 34x43  
8.37-31 36x27 9.32x5 43x32 10.5x35  
32-37 11.35-19 37-42 12.19-30 25x34  
13.44-39 34x43 14.49x47 +
- C12.** 1.25-20 26x37 2.41x21 16x27  
3.36-31 27x36 4.46-41 36x47 5.38-32  
47x45 6.32-27 22x31 7.39-34 45x29  
8.24x4 15x24 9.4x36
- C13.** 1.27-22 18x27 2.34-29 24x31  
3.16-11 25x43 4.11x2 27x38 5.35-30  
23x32 6.30-24 19x30 7.2x48 +
- C14.** 1.16-11 6x17 2.47-41 36x47  
3.37-32 47x33 4.32x12 18x7 5.29x9  
20x40 6.9x20 15x24 7.35x44 24x35  
8.44-40 35x44 9.50x17 +
- C15.** 1.36-31 25x14 2.28-23 18x49  
3.50-44 49x24 4.33-28 22x33 5.38x7  
2x11 6.31-27 +
- C16.** 1.24-19 13x33 2.34-30 25x43  
3.44-40 22x31 4.50-44 45x34 5.44-39  
33x44 6.26-21 16x38 7.42x13 31x42  
8.47x16 +
- C17.** 1.32-27 26x37 2.44-40 22x31  
3.24-19 23x14 4.47-42 37x48 5.33-28  
48x30 6.28-23 45x34 7.23x3 34x23  
8.3x35 25-30 9.35x10 5x14 10.50-44 +
- C18.** 1.37-31 26x48 2.30-24 48x19  
3.45-40 35x44 4.28-22 19x46 5.16-11  
21x43 6.11x2 18x27 7.2x5 +
- C19.** 1.49-43 12-17 2.30-24 19x30  
3.25-20 15x24 4.34x25 23x34 5.39x8  
28x48 6.37-32 26x28 7.8-3 22x31  
8.3x34 48x30 9.25x34 +
- C20.** 1.43-38 40x49 2.42-37 25x34  
3.28-23 19x39 4.37-31 26x28 5.16-11

21x43 6.11x44 49x40 7.48x10 15x4  
8.35x44 +

**C21.** 1.47-41 36x47 2.46-41 47x36  
3.31-26 36x22 4.45-40 16x27 5.40-34  
29x40 6.49-43 40x49 7.39-34 22x31  
8.34x3 49x32 9.26x30 35x24 10.3x22 +

**F22.** 1.24-20 15x24 2.30x28 17-22  
3.28x17 11x31 4.41-36 3-9 5.36x27  
18-23 6.29x18 13x31 7.47-41 31-36  
8.34-30 36x29 9.30-24 29x20 10.37-31  
26x37 11.48-42 37x48 12.39-34 48x30  
13.35x2 +

**F23.** 1.34-29 19-23 2.36-31 23x45  
3.33-29 27x36 4.37-32 28x48 5.29-23  
18x29 6.47-41 36x47 7.49-44 47x33  
8.39x10 48x50 9.25x3 5x14 10.3x6 +

**F24.** 1.22-18 24-29 2.18x7 2x11 3.39-  
33 30x50 4.33x4 50x47 5.4-27 35x44  
6.27-18 16x38 7.18x24 47x20 8.25x14

**C25.** 1.46-41 37x46 2.34-30 46x19  
3.33-28 12x32 4.21x1 32x21 5.36-31  
26x37 6.47-42 37x48 7.1-45 48x34  
8.45x2 35x24 9.25-20 +

**C26.** 1.20-14 9x20 2.40-34 29x49  
3.50-44 49x40 4.45x14 19x10 5.28x30  
17x39 6.15x4 35x24 7.4-10 5x14 8.38-  
33 39x28 9.32x1 21x41 10.16x7 26x37  
11.1-6 2x11 12.6x47 +

**C27.** 1.49-43 38x49 2.41-37 49x35  
3.48-43 39x48 4.20-15 48x22 5.15x4  
16x27 6.47-41 36x47 7.4-15 47x20  
8.15x17 35x21 9.26x28 +

**F28.** 1.32-27 31-36 2.25-20 14x25  
3.47-41 36x38 4.37-31 26x37 5.24-20  
22x31 6.30-24 19x39 7.46-41 23x45  
8.41x3 25x14 9.3x50 +

**F29.** 1.39-34 19-23 2.37-31 27x36  
3.47-41 36x47 4.32-27 21x43 5.25-20  
47x50 6.20x9 35x44 7.9-3 29x40  
8.3x49 +

**F30.** 1.33-29 13-18 2.39-33 28x30  
3.35x13 23x34 4.13-8 2x13 5.25-20  
15x24 6.31-27 21x43 7.48x8 22-28  
8.8-2 28-33 9.2-7 18-22 10.7-16 22-  
28 11.16-43 +

**C31.** 1.33-29 24x31 2.50-44 35x24  
3.32-27 31x33 4.39x28 23x32 5.44-40  
45x34 6.43-39 34x43 7.49x29 +

**C32.** 1.29-24 16x36 2.32-27 22x31  
3.38-32 20x29 4.42-37 31x42 5.47x38  
36x47 6.32-27 47x33 7.39x8 2x13  
8.34x1 13-18 9.1x10 5x14 10.27-22  
14-19 11.22-18 15-20 12.18-12 20-24  
13.12-8 24-29 14.8-3 29-33 15.3-25  
33-38 16.25-48 19-23 17.40-34 23-28  
18.44-39 38-43 19.39-33 28x30  
20.48x25 35-40 21.25-39 40-45 22.39-  
50 +

**F33.** 1.34-30 20-25 2.39-33 29x47  
3.36-31 25x34 4.27-22 47x40 5.22x2  
23x32 6.2x20 15x24 7.35x44 +

**C34.** 1.40-34 29x49 2.27-21 49x29  
3.39-34 16x18 4.34x5 11x22 5.5x2 24-  
29 6.2-24 29-34 7.24x15 34-39 8.15-  
38 39-44 9.45-40 44x35 10.38-49 6-11  
11.49-44 11-16 12.44-49 +

**C35.** 1.34-29 26x48 2.47-41 23x34  
3.39x30 48x50 4.32-27 25x34 5.28-23  
50x47 6.23x3 47x24 7.3x30 18-22  
(7... 15-20 8.30-25 20-24 9.25-9 18-  
23 10.9-13 24-29 11.13-9 +) 8.30-13  
22-28 9.13-24 28-32 10.24-42 15-20  
11.42x15 32-37 12.15-47 +

**F36.** 1.40-34 12-17 2.25-20 14x25  
3.29-23 18x49 4.48-43 25x34 5.37-31  
26x28 6.38-32 49x20 7.32x3 21x32  
8.3x5 15-20 9.5-32 20-24 10.32-38  
24-30 11.38-43 30-35 12.43-49 +

**C37.** 1.28-23 19x28 2.26-21 17x26  
3.22-17 11x22 4.27-21 26x17 5.31-27  
22x42 6.33x2 24x44 7.2x4 30x39  
8.4x30 25x34 9.50x30 14-19 10.30-24  
19x30 11.45-40 +

**C38.** 1.40-34 24x35 2.34-29 23x34  
3.39x30 35x24 4.47-41 36x47 5.28-22  
47x29 6.27-21 16x40 7.45x3 18x27  
8.3x6 +

**F39.** 1.35-30 25x34 2.39x30 14-20  
3.21-17 12x21 4.28-22 18x27 5.30-24  
19x30 6.33-29 23x34 7.43-39 34x43  
8.38x49 27x38 9.49-43 38x40 10.45x1  
21-27 11.1-23 2-7 12.23x1 27-32  
13.1-29 32-37 14.29-47 +



C40. 1.33-29 24x42 2.43-38 42x33  
3.28x39 19x37 4.34-29 17x28 5.26x6  
13x22 6.39-33 28x39 7.35-30 25x23  
8.6-1 +



*Leen de Rooij*



Arjen Timmer

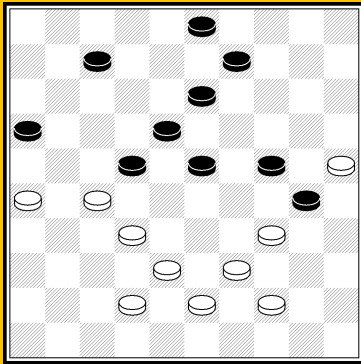


*Andreas Kuyken*

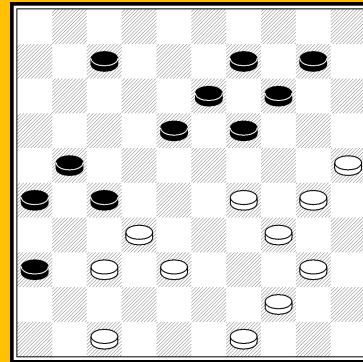


*Derk Vuurboom*

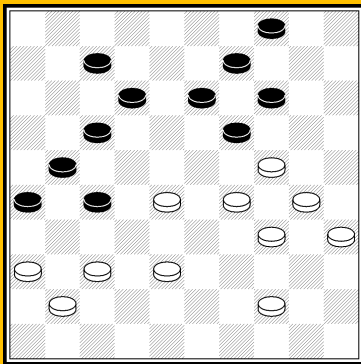
# Compositions of the author



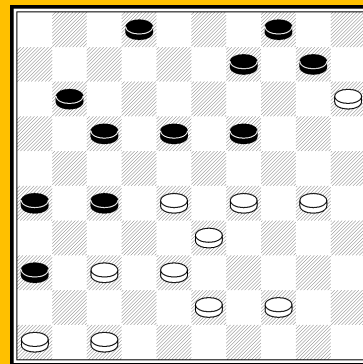
1.



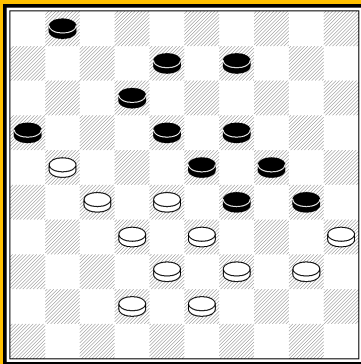
5.



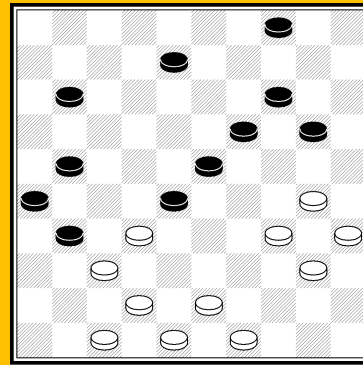
2.



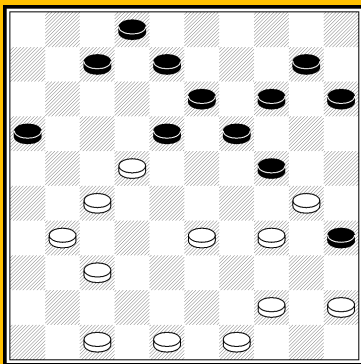
6.



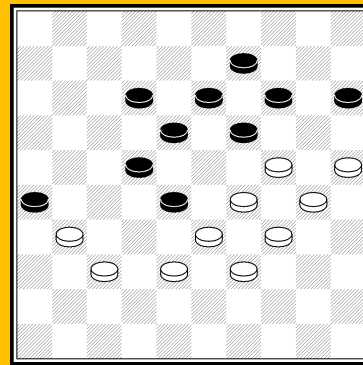
3.



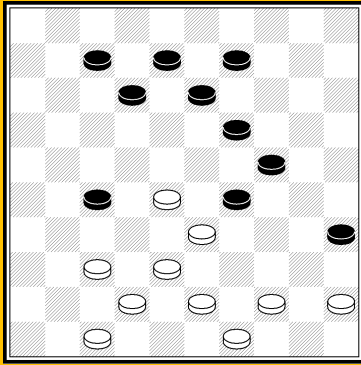
7.



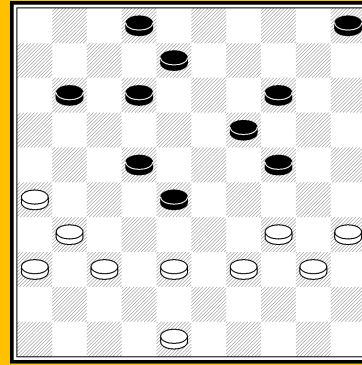
4.



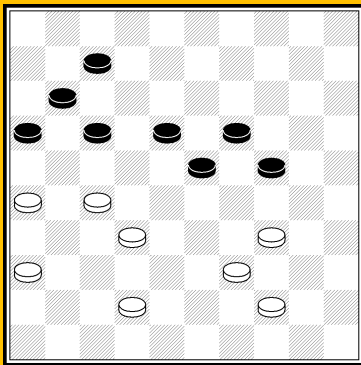
8.



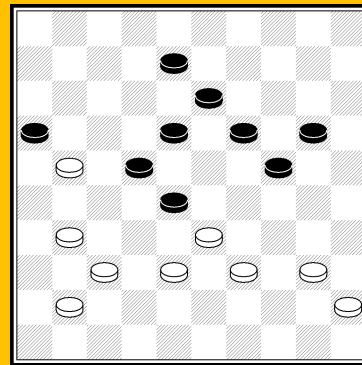
9. Forcing



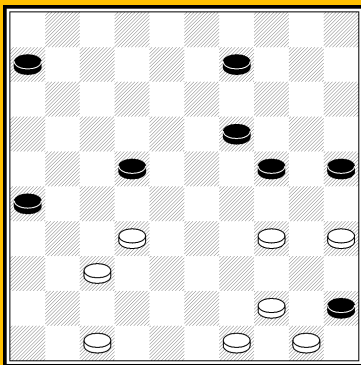
13. Forcing



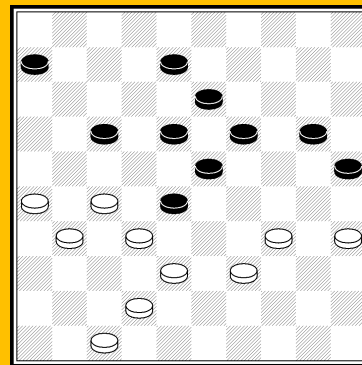
10. Forcing



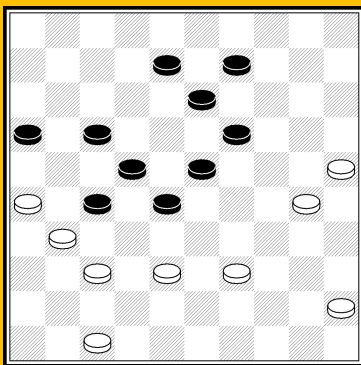
14.



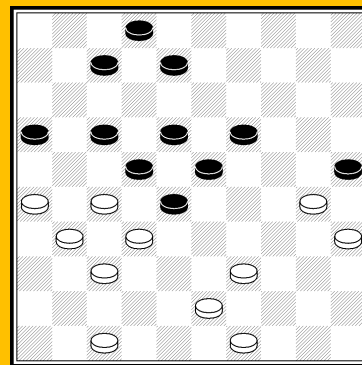
11.



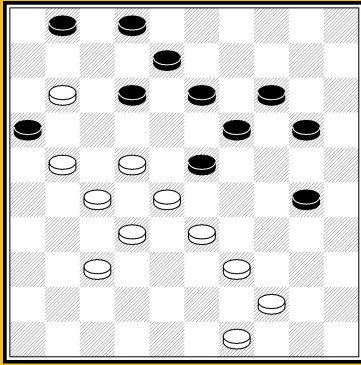
15.



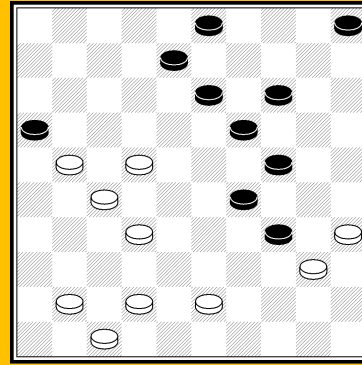
12.



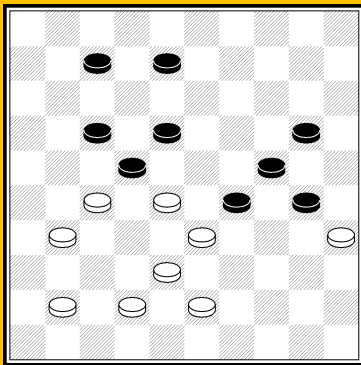
16. Forcing



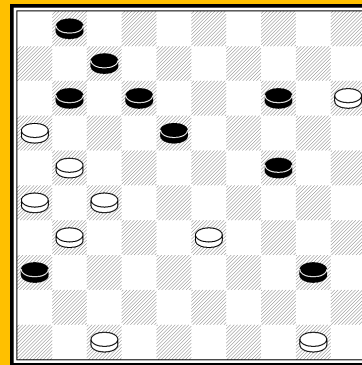
17.



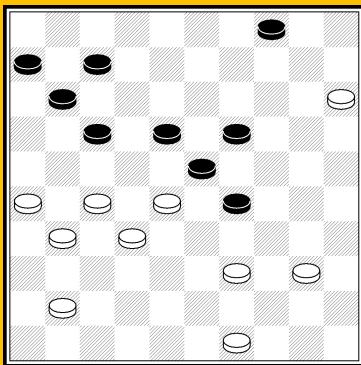
21.



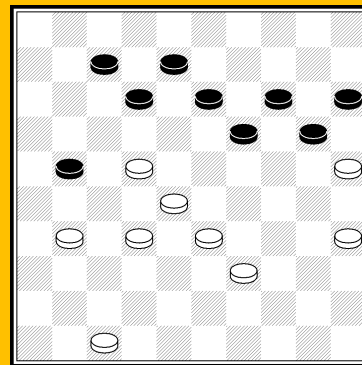
18.



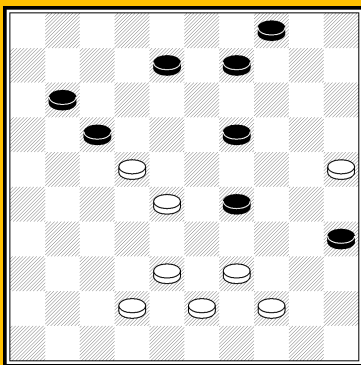
22.



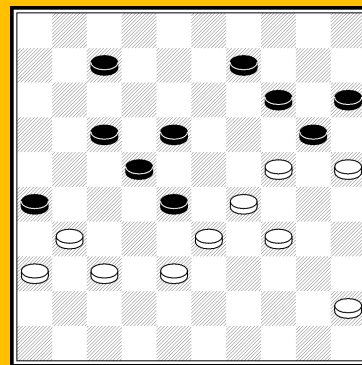
19.



23. Forcing



20.



24.

## Solutions

**1.** 1.26-21 22x31 2.42-37 31x33 3.39x8  
16x29 4.25x1 3x12 5.1x3 +

**2.** 1.24-20 14x25 2.36-31 27x47 3.29-  
23 47x49 4.23x3 25x34 5.37-31 26x37  
6.28-22 17x28 7.3x44 49x40 8.35x44 +

**3.** 1.21-17 12x21 2.39-34 30x37  
3.32x41 23x43 4.35-30 24x44 5.33x4  
21x32 6.4x2 1-7 7.2x11 16x7 8.41-37  
+

**4.** 1.27-21 16x36 2.34-29 18x27  
3.29x18 35x24 4.47-41 36x47 5.18-13!  
47x29 6.37-32 27x38 7.49-43 38x40  
8.45x5 8x19 9.5x1 2-7 10.1x20 15x24  
11.48-43 24-29 12.43-39 +

**5.** 1.25-20 14x25 2.29-23 18x29 3.34x3  
25x45 4.47-41 36x47 5.3-25 47x50  
6.25-3 27x38 7.37-31 26x37 8.3x1 50-  
28 9.49-44 28x50 10.1-6 +

**6.** 1.37-31 26x37 2.47-41 36x47 3.29-  
23 18x29 4.33x13 47x49 5.46-41 49x8  
6.41x5 11-17 7.5-37 17-21 8.37-31 2-  
8 9.31-26 21-27 10.26x3 27-31 11.3-  
26 31-36 12.26-37 +

**7.** 1.42-38 31x33 2.47-42 28x37  
3.42x31 26x37 4.43-39 33x44 5.48-42  
37x48 6.30-25 48x30 7.35x2 44x35  
8.2x5 Timmer: 35-40 9.25x14 40-45  
10.49-44 4-9 11.14x3 45-50 12.3-14  
50x10 13.5x14 +

**8.** 1.25-20 14x25 2.29-23 18x20  
(2...18x40 3.37-32 25x43 4.32x3  
43x32 5.3x46 26x37 6.46x45 +) 3.34-  
29 25x41 4.29-23 26x37 5.23x3 28x39  
6.3x47 15-20 7.47x15 +

**9.** 1.37-32 27-31 2.47-41 31-36 3.28-  
22 36x47 4.22-17 12x21 5.32-27 21x32  
6.38x27 47x16 7.43-39 29x38 8.39-33  
38x29 9.49-43 16x40 10.45x1 13-18  
11.1x15 35-40 12.15-33 40-45 13.33-  
50 +

**10.** 1.44-40 7-12 (1...17-22 2.39-33  
22x31 3.36x27 11-17 4.42-37 17-22  
5.37-31 W+) 2.39-33 24-29 3.33x22  
17x48 4.36-31 48x25 5.40-34 25x21 +

6.26x6 16-21 7.6-1 21-26 8.1x29  
26x37 9.29-47 +

**11.** 1.32-28 22x33 2.37-31 26x37 3.47-  
42 37x48 4.44-40 48x30 5.50-44 45x34  
6.44-39 33x44 7.49x20 25x14 8.35x4  
6-11 Alix: 9.4-15 11-17 10.15-42 17-  
21 11.42-26 21-27 12.26-3 14-19  
13.3-9 27-32 14.9-4 19-23 15.4-15  
23-28 16.15-42 +

**12.** 1.39-33 28x39 2.38-32 27x36  
3.26-21 16x38 4.37-31 36x27 5.30-24  
19x30 6.25x14 23-29 7.14-10 29-34  
8.10-4 13-18 Timmer: 9.47-42 34-39  
10.42-38 39-44 11.45-40 44x35 12.38-  
32 35-40 13.32-28 22x33 14.4x35 +

**13.** 1.26-21 11-16 (1...11-17 2.35-30  
24x42 3.31-26 42x31 4.36x7 2x11  
5.21x3 + ; 1...12-18 2.21-17 + ;  
1...2-7 2.31-26 11-16 3.39-33 28x30  
4.38-33 16x27 5.33-29 24x33 6.35x11  
+ ; 1...8-13 2.31-26 24-30 (2...11-  
16 3.34-29 24x31 4.36x20 16x27 5.39-  
33 28x39 6.40-34 39x30 7.35x13 +)  
3.34x25 11-16 4.35-30 16x27 5.39-33  
28x39 6.30-24 19x30 7.25x43 2-7  
8.37-32 7-11 9.32x21 11-16 10.48-42  
16x27 11.42-37 W+1) 2.31-26 16x27  
3.26-21 27x16 4.34-29 24x31 5.36x7  
2x11 6.39-33 28x39 7.40-34 39x30  
8.35x2 16-21 9.2x10 5x14 10.48-43  
14-19 11.43-39 +

**14.** 1.39-34 16x47 2.37-32 28x30  
3.40-34 47x40 4.45x3 24-29 5.3-25  
29-33 6.25-43 13-18 7.32-28 33-38  
8.43x16 22x33 9.16-7 18-22 10.7-16  
22-28 11.16-43 +

**15.** 1.26-21 17x48 2.47-42 48x22  
3.34-29 23x43 4.32x3 43x32 5.35-30  
25x34 6.3x9 19-24 7.9-22 24-30 8.22-  
39 30-35 9.39-44 +

**16.** 1.30-24 19x30 2.35x24 7-12 3.24-  
19 23x14 4.32x23 18x29 5.27x7 2x11  
6.26-21 16x36 7.37-31 36x27 8.39-33  
29x38 9.43x3 11-16 10.3x20 25x14  
11.49-44 (or 49-43) +

**17.** 1.11-7 2x11 2.22-18 13x42 3.39-  
34 16x40 4.44x2 23x32 5.2x47 14-19  
6.47x15 19-24 7.15x7 1x12 8.49-43 +

**18.** 1.38-32 (1.28-23? 8-13 2.23x14  
17-21 3.27x16 22-28 4.33x22 18x47=)  
1...29x36 2.27-21 36x49 3.21x1 22x33  
4.1x44 49x40 5.35x44 +

**19.** 1.40-34 29x40 2.49-44 40x49  
3.39-34 30x39 4.27-21 49x47 5.21x1  
23x32 6.1x24 47x20 7.15x24 +

**20.** 1.44-40 35x33 2.28x39 17x28 3.38-  
32 28x48 4.39-34 48x30 5.25x12 David  
& Goliath: 4-9 6.12-8 9-14 7.8-3 14-  
19 8.3-8 19-23 9.8-24 11-17 10.24-38  
23-28 11.38-16 28-33 12.16-43 17-22  
13.43-16 22-28 14.16-43 +

**21.** 1.35-30 24x44 2.22-18 13x31 3.43-  
39 16x38 4.42x2 34x43 5.41-37 31x42  
6.47x40 3-8 7.2x10 5x14 8.40-34 +

**22.** 1.47-41 36x47 2.21-17 12x32 3.50-  
45 47x29 4.45x12 7x18 5.16x7 1x12  
6.31-27 32x21 7.26x8 24-30 8.8-3 30-  
35 9.3x25 35-40 10.25-34 40x29  
11.15-10 29-33 12.10-4 18-23 13.4-10  
23-29 14.10-15 29-34 15.15x38 34-40  
16.38-33 40-45 17.33-50 +

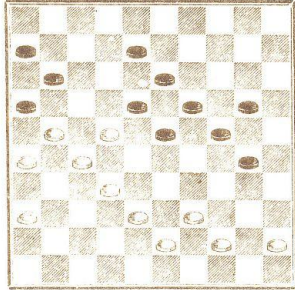
**23.** 1.22-17 21-26 2.32-27 12x23 3.39-  
34 26x37 4.47-42 37x48 5.33-29 48x30  
6.29x9 14x3 7.35x11 20-24 Timmer:  
8.11-7 24-29 9.7-2: 3-9 (9...29-33  
10.2-24 33-39 11.25-20) 10.2-24  
29x20 11.25x3 +

**24.** 1.34-30 28x39 2.37-32 26x28  
3.38-32 28x37 4.24-19 14x34 5.25x3  
34x25 6.3x1 22-28 7.1-29 28-32 H.J.  
van Alphen: 8.36-31 25-30 9.31-27  
32x21 10.29-18 15-20 11.18-9 20-24  
12.9-25 30-35 13.25-43 21-26 14.43-  
49 26-31 15.45-40 35x44 16.49x36 +

**2<sup>e</sup> PRIX**

**M. ZIMMERMANN CONTRE M. MOYENCOURT**

*Les Blancs jouent et gagnent.*



**Execution du coup.**

Blancs.	Noirs.
32 29	21 32
22 17	11 31
29 28	16 27
38 32	27 10

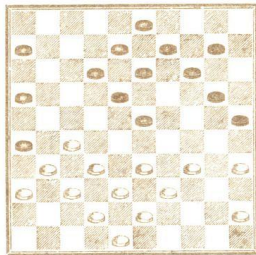
(1) 2 gagne.

**DIAGRAMMES DES DEUX PLUS BEAUX COUPS**

**1<sup>er</sup> PRIX**

**M. DESHAYES CONTRE M. NICOD**

*Les Blancs jouent et forcent le gain d'un pion.*



**Execution du coup.**

Blancs.	Noirs.
33 29(1)	12 17(1)
27 22(2)	18 27(2)
31 11(1)	6 17(4)
29 18	13 22
37 31	10 28
39 33	18 30

(3) 2 gagne.

(1) Pour éviter de laisser le Pion.  
(2) Meilleur que 27 21, 31 11, 27 31, 30 23, 35 4.  
(3) Si 17 28, les Blancs gagnent de suite par 29 23.  
(4) Les Noirs devaient perdre par 15 à 7 parce qu'au 2<sup>e</sup> coup, le Pion Blanc 28 n'out pas fait Dame à 2. Toutefois les Blancs auraient toujours gagné le Pion avec l'avantage de la position.